

MONTHLY MEMBERSHIP PROGRESS REPORT

LOCATION INDIA

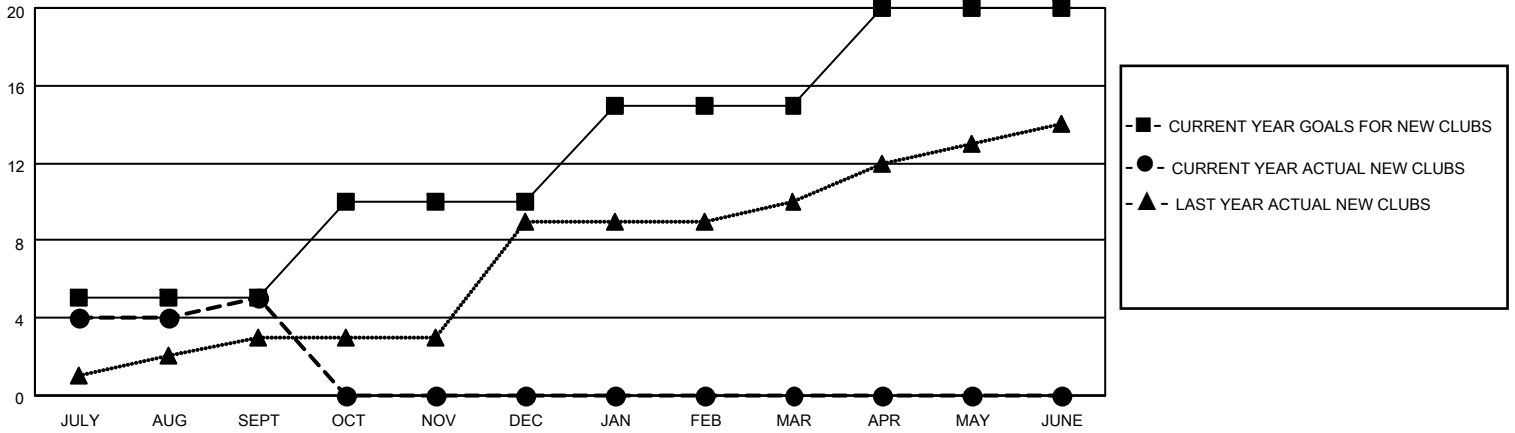
District 318 A

Results as of: 9/30/2021

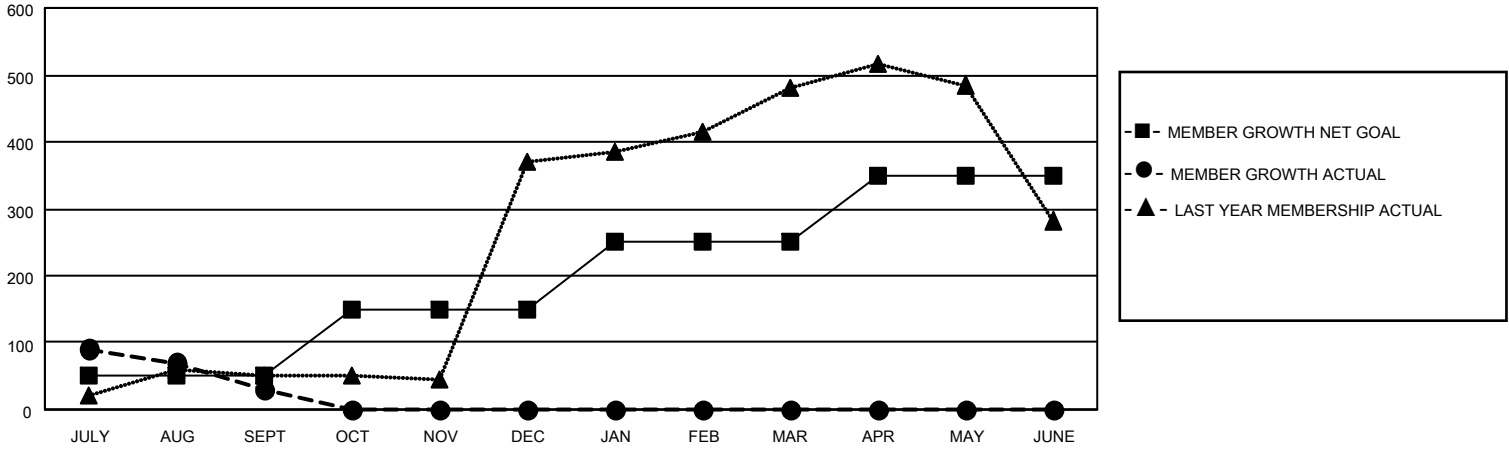
Clubs			
RESULTS FOR 2021-2022			
QUARTER	NEW CLUB GOAL	NEW CLUBS	DROPPED CLUBS
JULY/AUG/SEPT	5	5	3
OCT/NOV/DEC	5	0	0
JAN/FEB/MAR	5	0	0
APR/MAY/JUNE	5	0	0

Members			
RESULTS FOR 2021-2022			
QUARTER	MEMBER GROWTH NET GOAL	MEMBER GROWTH ACTUAL	DROPPED MEMBERS ACTUAL (including transfers)
JULY/AUG/SEPT	50	190	150
OCT/NOV/DEC	100	0	0
JAN/FEB/MAR	100	0	0
APR/MAY/JUNE	100	0	0

GOALS AND ACTUAL NEW CLUBS CUMULATIVE



GOALS AND ACTUAL MEMBERS CUMULATIVE



DROPPED CLUBS: 3

37 CLUBS OF 144 ADDED 1 OR MORE NEW MEMBERS

GENDER DISTRIBUTION

DROPPED MEMBERS

DECEASED	6
CLUB CANCELLED	42
OTHER	102
TOTAL	150

MALE	3,151 (74.11%)
FEMALE	1,101 (25.89%)
NON BINARY	0 (0.00%)
PREFER NOT TO ANSWER	0 (0.00%)

[CLICK HERE FOR CUMULATIVE MEMBERSHIP DATA](#)

TOTAL FAMILY UNIT MEMBERS	2,071
FAMILY MEMBERS PAYING HALF DUES	1,123